

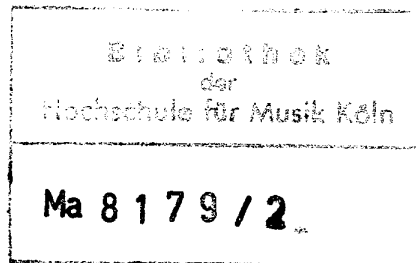
TWO

parts for flute and piano

for Roberto Fabbriciani and Carlo Neri



New York City, April 1987



Copyright © 1987 by Henmar Press Inc., 373 Park Avenue South, New York, NY 10016

Each part has ten time brackets, nine which are flexible with respect to beginning and ending, and one, the eighth, which is fixed. No sound is to be repeated within a bracket. In the piano part each ictus in a single staff is to be played in the order given, but can be played in any relation to the sounds in the other staff. Some notes are held from one ictus to the next. A tone in parentheses is not to be played if it is already sounding. One hand may assist the other.

TWO

John Cage

0'00" ↔ 0'45" 0'30" ↔ 1'15"

1'00" ↔ 1'45" 1'30" ↔ 2'15"

2'00" ↔ 2'45" 2'30" ↔ 3'15"

3'00" ↔ 3'45" 3'30" ↔ 4'15"

4'00" ↔ 4'45" 4'30" ↔ 5'15"

5'00" ↔ 5'45" 5'30" ↔ 6'15"

Musical score for the first system, measures 5:00-5:45 and 5:30-6:15. The score is written for piano in two staves. The first staff (treble clef) contains the upper voice, and the second staff (bass clef) contains the lower voice. Dynamics include *f*, *mf*, and *mp*. The key signature changes from one sharp (F#) to one flat (Bb) during the second measure.

6'00" ↔ 6'45" 6'30" ↔ 7'15"

Musical score for the second system, measures 6:00-6:45 and 6:30-7:15. The score is written for piano in two staves. Dynamics include *mp*, *f*, and *mf*. The key signature changes from one flat (Bb) to one sharp (F#) during the second measure.

7'15" 7'45"

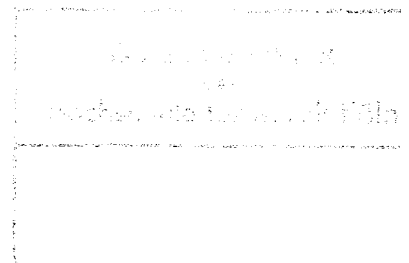
Musical score for the third system, measures 7:15 and 7:45. The score is written for piano in two staves. Dynamics include *f*, *mf*, and *mp*. The key signature changes from one sharp (F#) to one flat (Bb) during the second measure.

7'45" ↔ 8'30" 8'15" ↔ 9'00"

Musical score for the fourth system, measures 7:45-8:30 and 8:15-9:00. The score is written for piano in two staves. Dynamics include *mp* and *mf*. The key signature changes from one flat (Bb) to one sharp (F#) during the second measure.

8'45" ↔ 9'30" 9'15" ↔ 10'00"

Musical score for the fifth system, measures 8:45-9:30 and 9:15-10:00. The score is written for piano in two staves. Dynamics include *mf*, *mp*, and *f*. The key signature changes from one sharp (F#) to one flat (Bb) during the second measure.



TWO

John Cage

0'00" ↔ 0'45" 0'30" ↔ 1'15"



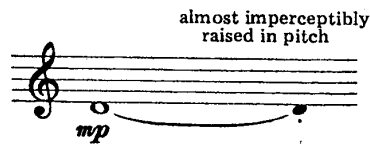
1'00" ↔ 1'45" 1'30" ↔ 2'15"



2'00" ↔ 2'45" 2'30" ↔ 3'15"



3'00" ↔ 3'45" 3'30" ↔ 4'15"



4'00" ↔ 4'45" 4'30" ↔ 5'15"



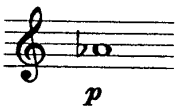
5'00" ↔ 5'45" 5'30" ↔ 6'15"



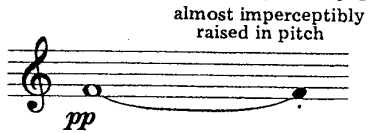
6'00" ↔ 6'45" 6'30" ↔ 7'15"



7'15" 7'45"



7'45" ↔ 8'30" 8'15" ↔ 9'00"



8'45" ↔ 9'30" 9'15" ↔ 10'00"

